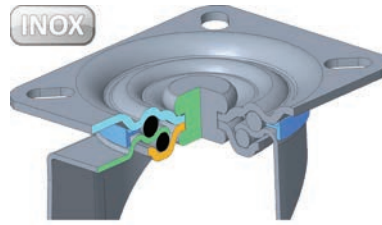


Componenti in acciaio stampato INOX AISI 304.  
Rotazione piastra su doppia corona di sfere in acciaio INOX AISI 420.  
Piste rotazione sfere calibrate e lubrificate.  
Anello di protezione sfere antipolvere.  
Perno ribadito per assemblaggio supporto.  
Frenature integrali a pedale regolabile, con molle di azionamento freni INOX AISI 301.



Pressed stainless steel AISI 304 components.  
Double ball races with stainless steel balls in AISI 420.  
Calibrated and lubricated ball race tracks.  
Dust protection ring.  
Riveted pin for housing's assembling  
Stainless steel AISI 301 foot lever adjustable brake with springs.

girevole piastra / swivel castor



80X32	105x85	80x60	9x16	38	108	COD	daN	COD	daN	INOX	Kg	
											1FHN080SGXO	120
<b>100x32</b>	105x85	80x60	9x16	38	128	<b>1NHX100SGXO</b>	120				<b>1FHN100SGXO</b>	120
<b>125x40</b>	105x85	80x60	9x16	45	155	<b>1NHX125LGXO</b>	180	<b>1NHT125LGXO</b>	180		<b>1FHN125LGXO</b>	180
<b>160x50</b>	135x110	105x80	11x16	55	198	<b>1NHX160LGXO</b>	250	<b>1NHT160LGXO</b>	250		<b>1FHN160LGXO</b>	220
<b>200x50</b>	135x110	105x80	11x16	55	239	<b>1NHX2000GXO</b>	300	<b>1NHT2000GXO</b>	300		<b>1FHN2000GXO</b>	260

girevole piastra freno pedale anteriore regolabile / swivel castor



80X32	105x85	80x60	9x16	38	108	COD	daN	COD	daN	INOX	Kg	
											1FHN080SGXI	120
<b>100x32</b>	105x85	80x60	9x16	38	128	120	<b>1NHX100SGXI</b>	120			<b>1FHN100SGXI</b>	120
<b>125x40</b>	105x85	80x60	9x16	45	155	120	<b>1NHX125LGXI</b>	180	<b>1NHT125LGXI</b>	180	<b>1FHN125LGXI</b>	180
<b>160x50</b>	135x110	105x80	11x16	55	198	140	<b>1NHX160LGXI</b>	250	<b>1NHT160LGXI</b>	250	<b>1FHN160LGXI</b>	220
<b>200x50</b>	135x110	105x80	11x16	55	239	140	<b>1NHX2000GXI</b>	300	<b>1NHT2000GXI</b>	300	<b>1FHN2000GXI</b>	260

girevole foro per vite / swivel castor with adjustable front brake foot lever



80X32	12	38	104	COD	daN	COD	daN	INOX	Kg	
									1FHN080SQXO	120
<b>100x32</b>	12	77	38	124	<b>1NHX100SQXO</b>	120			<b>1FHN100SQXO</b>	120
<b>125x40</b>	12	77	45	151	<b>1NHX125LQXO</b>	180	<b>1NHT125LQXO</b>	180	<b>1FHN125LQXO</b>	180
<b>160x50</b>	16	103	55	193	<b>1NHX160LQXO</b>	250	<b>1NHT160LQXO</b>	250	<b>1FHN160LQXO</b>	220
<b>200x50</b>	16	103	55	233	<b>1NHX2000QXO</b>	300	<b>1NHT2000QXO</b>	300	<b>1FHN2000QXO</b>	260

girevole foro per vite freno pedale anteriore regolabile / bolt hole swivel castor with adjustable front brake foot lever



80X32	12	38	104	COD	daN	COD	daN	INOX	Kg		
									1FHN080SQXI	120	
<b>100x32</b>	12	77	38	124	120	<b>1NHX100SQXI</b>	120		<b>1FHN100SQXI</b>	120	
<b>125x40</b>	12	77	45	151	120	<b>1NHX125LQXI</b>	180	<b>1NHT125LQXI</b>	180	<b>1FHN125LQXI</b>	180
<b>160x50</b>	16	103	55	193	140	<b>1NHX160LQXI</b>	250	<b>1NHT160LQXI</b>	250	<b>1FHN160LQXI</b>	220
<b>200x50</b>	16	103	55	233	140	<b>1NHX2000QXI</b>	300	<b>1NHT2000QXI</b>	300	<b>1FHN2000QXI</b>	260

fisso piastra / fixed castor



80X32	105x85	80x60	9x16	128	COD	daN	COD	daN	INOX	Kg	
										1FHN080SFXO	120
<b>100x32</b>	105x85	80x60	9x16	128	<b>1NHX100SFXO</b>	120				<b>1FHN100SFXO</b>	120
<b>125x40</b>	105x85	80x60	9x16	155	<b>1NHX125LFXO</b>	180	<b>1NHT125LFXO</b>	180		<b>1FHN125LFXO</b>	180
<b>160x50</b>	135x110	105x80	11x16	198	<b>1NHX160LFXO</b>	250	<b>1NHT160LFXO</b>	250		<b>1FHN160LFXO</b>	220
<b>200x50</b>	135x110	105x80	11x16	239	<b>1NHX2000FXO</b>	300	<b>1NHT2000FXO</b>	300		<b>1FHN2000FXO</b>	260



RUOTE NUCLEO POLIAMMIDE ANELLO GOMMA GRIGIA ELASTICA ANTITRACCIA

POLYAMIDE CENTRE WHEELS WITH GREY NON-MARKING ELASTIC RUBBER TYRES



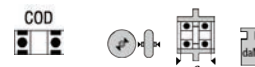
Caratteristiche Ruota

Anello in gomma grigia ELASTICA antitraccia  
 Struttura portante in poliammide colore nero.  
 Movimento mozzo:  
 gabbia a rulli inox.  
 doppi cuscinetti a sfera tenuta stagna.  
 Temperatura d'impiego da -10°C a +60°C.  
 Buona resistenza agli aggressivi chimici.  
 Durezza battistrada 65 Sh.A +/- 5.  
 Ottima resistenza all'abrasione.  
 Velocità massima di lavoro 4 km/h.  
 Mezzo di trazione consigliato: manuale.

Wheel Features

Grey non-marking ELASTIC rubber tyre.  
 Black polyamide centre wheel.  
 Type of bearing:  
 stainless steel roller bearing.  
 double waterproof ball bearings.  
 Temperature range: from -10°C to +60°C.  
 Good resistance to chemicals.  
 Tread hardness 65 Sh.A +/- 5.  
 Very good resistance to abrasion.  
 Max. working speed 4 KPH.  
 Operation: manual.

Pavimentazioni Idonee / Floring Type



100x32	ONHX100S12	12x40	160				
125x40	ONHX125L15	15x46	225	ONHT125L15	15x47	30	225
160x50	ONHX160L20	20x60	300	ONHT160L20	20x61	40	300
200x50	ONHX200O20	20x60	350	ONHT200O20	20x61	40	400

FEATURES

They are made with high quality polypropylene and thermoplastic rubber coating, 70 Shore A hardness; ensuring complete protection of floors and a total absence of noise, resistant to most chemicals, ozone, UV, abrasion, fatigue and tear. The temperature range is from -10°C to +50°C.



FHN

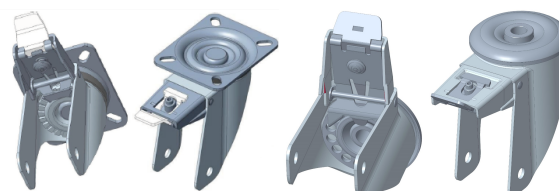
ART. (CODE)



80 FH (26080H00)



80 FH (26080H00)	80	35	40	8	150
100 FH (26100H00)	100	32	40	8	150
125 FH (26125H00)	125	38	45	8	180
160 FH (26160H00)	160	48	58	12	250
200 FH (26200H00)	200	50	58	12	300



Varianti / Options



MN Anello in gomma grigia Elastica Antistatica  
 Antistatic elastic grey rubber tyre



Parafili in lega leggera  
 Light Metal thread guards



Parafili in poliammide  
 Polyamide thread guards

Le dimensioni riportate sulle pagine del nostro catalogo sono espresse in millimetri  
 All dimensional sizes shown on our catalogue are in millimeters.