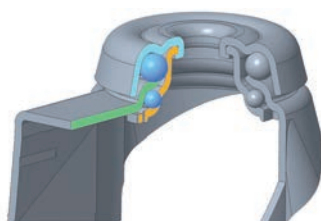




Supporto in acciaio stampato girevole su doppio giro di sfere.
Finitura zincata.



Steel swivel housing on double ball races.
Zinc plated finishing.

girevole piastra / swivel castor



							COD	
40x18	55x55	44x44	6	24,5	59		3EGA0400GLOP	30
50x18	42x42	30x30	5	24,5	66		3EGA0500GLOP	35
50x18	55x55	44x44	6	24,5	66		3EGA0500GLO2P	35
50x24	60x60	46x46	6	21	72		3EGA050LGLOP	40
60x24	60x60	46x46	6	21	82		3EGA060LGLOP	50
80x24	60x60	46x46	6	25	103		3EGA0800GLOP	55
100x24	60x60	46x46	6	32	121		3EGA1000GLOP	55
125x30	60x60	46x46	6	40	149		3EGA1250GLOP	80

girevole piastra freno pedale anteriore / swivel castor with front brake foot lever



							COD	
40x18	55x55	44x44	6	24,5	59		3EGA0400GLDP	30
50x18	42x42	30x30	5	24,5	66		3EGA0500GLDP	35
50x18	55x55	44x44	6	24,5	66		3EGA0500GLD2P	35
50x24	60x60	46x46	6	21	72		3EGA050LGLDP	40
60x24	60x60	46x46	6	21	82		3EGA060LGLDP	50
80x24	60x60	46x46	6	25	103		3EGA0800GLDP	55
100x24	60x60	46x46	6	32	121		3EGA1000GLDP	55
125x30	60x60	46x46	6	40	149		3EGA1250GLDP	80

girevole foro per vite / bolt hole swivel castor



						COD		
40x18		8		24,5	59		3EGA0400QLOP	30
50x18		8		24,5	66		3EGA0500QLOP	35
50x24		10		21	72		3EGA050LQLOP	40
60x24		10		21	82		3EGA060LQLOP	50
80x24		10		25	103		3EGA0800QLOP	55
100x24		10		32	121		3EGA1000QLOP	55
125x30		12		40	149		3EGA1250QLOP	80

girevole foro per vite freno pedale anteriore / bolt hole swivel castor with front brake foot lever



						COD		
40x18		8		24,5	59		3EGA0400QLDP	30
50x18		8		24,5	66		3EGA0500QLDP	35
50x24		10		21	72		3EGA050LQLDP	40
60x24		10		21	82		3EGA060LQLDP	50
80x24		10		25	103		3EGA0800QLDP	55
100x24		10		32	121		3EGA1000QLDP	55
125x30		12		40	149		3EGA1250QLDP	80



fisso piastra / fixed castor



						COD	
40x18	55x55	44x44	6	59		3EGA0400FL02P	30
50x18	55x55	44x44	6	66		3EGA0500FL02P	35
50x24	60x60	46x46	6	72		3EGA050LFL0P	40
60x24	60x60	46x46	6	82		3EGA060LFL0P	50
80x24	60x60	46x46	6	103		3EGA0800FL0P	55
100x24	60x60	46x46	6	121		3EGA1000FL0P	55
125x30	105x85	80x60	9	149		3EGA1250FL0P	80



RUOTE NUCLEO TERMOPLASTICO ANELLO GOMMA GRIGIA E PARAFILI
 PLASTIC CENTRE WHEELS WITH GREY RUBBER TYRES AND THREAD
 GUARDS

C

Caratteristiche Ruota

Anello in gomma grigia.
 Struttura portante in polipropilene antiurto
 colore nero
 Doppi dischi parafili
 Movimento mozzo:
 alesaggio passante.
 Temperatura d'impiego da +5°C a +40°C.
 Discreta resistenza agli aggressivi chimici.
 Discreta resistenza all'abrasione.

Wheel Features

Grey rubber tyre
Black shock resistant polypropylene
centre wheel.
Thread guards
Type of bearing:
plain bearing.
Temperature range: from +5°C to +40°C.
Fair resistance to chemicals.
Fair resistance to abrasion.



	COD		
40x18	2EGA040006P	6x20	30
50x18	2EGA050006P	6x20	35
50x24	2EGA050L06P	6x30	40
60x24	2EGA060L06P	6x30	50
75x24	2EGA075006P	6x30	40
80x24	2EGA080006P	6x30	55
100x24	2EGA100006P	6x30	55
125x30	2EGA125008P	8x36	80

Varianti / Options

Le dimensioni riportate sulle pagine del
 nostro catalogo sono espresse in millimetri
 All dimensional sizes shown on our
 catalogue are in millimeters.