

RUOTE IN ALLUMINIO PRESSOFUSO RIVESTIMENTO POLIURETANO SOFT  
AD ALTO SPESSORE

ALUMINIUM CENTRE WHEELS WITH GREEN SOFT POLYURETHANE  
TREAD



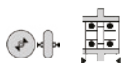
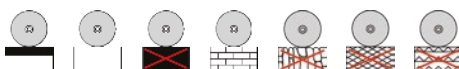
**Caratteristiche Ruota**

- Rivestimento in poliuretano SOFT ad alto spessore.
- Struttura portante in alluminio pressofuso.
- Movimento mozzo:  
doppi cuscinetti a sfere tenuta stagna.
- Temperatura d'impiego da -20°C a +80°C.
- Buona resistenza agli aggressivi chimici.
- Durezza battistrada 70 Sh.A +/- 5
- Ottima resistenza all'abrasione.
- Velocità massima di lavoro 4 km/h.
- Mezzo di trazione consigliato: manuale.

**Wheel features**

- Soft polyurethane tread with high tickness.
- Die-cast aluminium centre wheel.
- Type of bearing:  
double waterproof ball bearings.
- Temperature range: from -20°C to +80°C.
- Good resistance to chemicals.
- Tread hardness 70 Sh.A +/- 5
- Very good resistance to abrasion.
- Max. working speed 4 KPH.
- Operation: manual.

**Modalità di impiego/Main features**



80x30	OZKT080012	12x42	30	105	OZKL080032A	32x10-30
100x30	OZKT100012	12x41	29	160	OZKL100032B	32x12,5-34
100x40	OZKT100015	15x47	30	240	OZKL100035B	35x14-36
125x30	OZKT125015	15x47	30	165	OZKL125035B	35x14-36
125x50	OZKT125020	20x61	50	530	OZKL125047D	47x17,5-57
125x50	OZKT125C20	20x61	50	350	OZKL125C47D	47x17,5-57
150x50	OZKT150C20	20x61	50	400	OZKL150C47D	47x17,5-57
160x50	OZKT160Y20	20x61	50	560	OZKL160Y47D	47x17,5-57
200x50	OZKT200Y20	20x61	50	690	OZKL200Y52B	47x17,5-57
250x50	OZKT250A25	25x64	53	830	OZKL250A52B	47x12,5-54
300x60	OZKT300A30	30x60	60	1130	OZKL300A62A	62x16-60

**Varianti/Options**

**Accessori/Accessories**