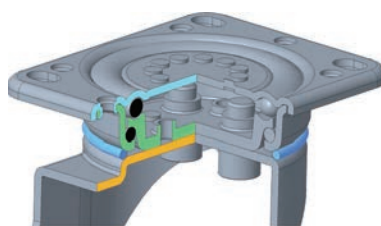



**SERIE T**

Componenti in acciaio stampato di grosso spessore zincati galvanicamente.  
 Rotazione piastra su doppia corona di sfere in acciaio.  
 Piste rotazione sfere coniate, calibrate e lubrificate con ingrassatore.  
 Anello di protezione sfere antipolvere.  
 Doppi bulloni per assemblaggio forcella.  
 Frenature integrale a pedale, con molle di azionamento freni in acciaio inox AISI 301.



*High thickness, pressed steel, zinc-plated components.  
 Double ball races with hardened steel balls.  
 Calibrated and lubricated ball race tracks.  
 Grease nipple.  
 Dust protection ring.  
 Two bolts for fork's assembling.  
 Stainless steel AISI 301 foot lever total brake with springs.*

girevole piastra / swivel castor



										COD	
<b>80x42</b>	105x85	80x60	9x16	40	8x42	80				<b>SGT00800A0N</b>	250
<b>100x42</b>	105x85	80x60	9x16	40	8x42	92				<b>SGT0100SA0N</b>	250
<b>100x49</b>	105x85	80x60	9x16	45	10x49	90				<b>SGT01000B0N</b>	350
<b>100x62</b>	135x110	105x80	11x16	50	12x62	100				<b>SGT0100LC0N</b>	750
<b>125x49</b>	105x85	80x60	9x16	45	10x49	102,5				<b>SGT01250B0N</b>	350
<b>125x62</b>	135x110	105x80	11x16	50	12x62	117				<b>SGT0125LC0N</b>	750
<b>150x49</b>	105x85	80x60	9x16	45	10x49	115				<b>SGT01500B0N</b>	350
<b>160x62</b>	135x110	105x80	11x16	50	12x62	132				<b>SGT01600C0N</b>	750
<b>180x62</b>	135x110	105x80	11x16	50	12x62	142				<b>SGT01800C0N</b>	750
<b>200x62</b>	135x110	105x80	11x16	55	12x62	152				<b>SGT02000C0N</b>	750

girevole piastra freno pedale anteriore / swivel castor for directional lock

A - tutti i tipi di ruote  
 all type of wheels  
 B - solo rivestimento gomma  
 only rubber tread  
 C - no rivestimento gomma  
 no rubber tread



									Freno Brake	COD	
<b>80x42</b>	105x85	80x60	9x16	40	8x42	80	120		A	<b>SGTD0800APN</b>	250
<b>100x42</b>	105x85	80x60	9x16	40	8x42	92	120		A	<b>SGTD100SAPN</b>	250
<b>100x49</b>	105x85	80x60	9x16	45	10x49	90	120		A	<b>SGTD1000BLN</b>	350
<b>100x62</b>	135x110	105x80	11x16	50	12x62	100	146		A	<b>SGTD100LCN</b>	750
<b>125x49</b>	105x85	80x60	9x16	45	10x49	102,5	120		A	<b>SGTD1250BLN</b>	350
<b>125x49</b>	105x85	80x60	9x16	45	10x49	102,5	120		B	<b>SGTD1250BMN</b>	350
<b>125x62</b>	135x110	105x80	11x16	50	12x62	117	146		B	<b>SGTD125LCJN</b>	750
<b>125x62</b>	135x110	105x80	11x16	50	12x62	117	146		C	<b>SGTD125LCN</b>	750
<b>150x49</b>	105x85	80x60	9x16	45	10x49	115	120		A	<b>SGTD1500BMN</b>	350
<b>150x62</b>	135x110	105x80	11x16	50	12x62	132	146		A	<b>SGTD1500CKN</b>	750
<b>160x62</b>	135x110	105x80	11x16	50	12x62	132	146		A	<b>SGTD1600CIN</b>	750
<b>175x62</b>	135x110	105x80	11x16	50	12x62	142	146		C	<b>SGTD1750CYN</b>	750
<b>180x62</b>	135x110	105x80	11x16	50	12x62	142	146		C	<b>SGTD1800CIN</b>	750
<b>180x62</b>	135x110	105x80	11x16	50	12x62	142	146		B	<b>SGTD1800CVN</b>	750
<b>200x62</b>	135x110	105x80	11x16	55	12x62	152	146		B	<b>SGTD2000CGN</b>	750
<b>200x62</b>	135x110	105x80	11x16	55	12x62	152	146		C	<b>SGTD2000CWN</b>	750

fisso piastra / fixed castor



								COD	
<b>80x42</b>	105x85	80x60	9x16		8x42	78		<b>SFI01000A0</b>	250
<b>100x42</b>	105x85	80x60	9x16		8x42	92		<b>SFI0125SA0</b>	250
<b>100x49</b>	105x85	80x60	9x16		10x49	90		<b>SFM01000B0</b>	350
<b>100x62</b>	135x110	105x80	11x16		12x62	100		<b>SFM0100LC0</b>	750
<b>125x49</b>	105x85	80x60	9x16		10x49	102,5		<b>SFM01250B0</b>	350
<b>125x62</b>	135x110	105x80	11x16		12x62	117		<b>SFM0160AC0</b>	1300
<b>150x49</b>	105x85	80x60	9x16		10x49	115		<b>SFM01500B0</b>	350
<b>160x62</b>	135x110	105x80	11x16		12x62	132		<b>SFM01800C0</b>	1300
<b>180-200x62</b>	135x110	105x80	11x16		12x62	142		<b>SFM0200TC0</b>	750
<b>200x62</b>	135x110	105x80	11x16		12x62	152		<b>SFM0200AC0</b>	1300