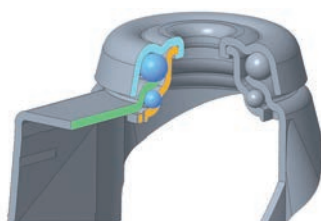




Supporto in acciaio stampato girevole su doppio giro di sfere. Finitura zincata.



Steel swivel housing on double ball races. Zinc plated finishing.

girevole piastra / swivel castor



						COD	
50x18	60x60	46x46	6	30	72	3EGA0500GLDDP	60
75x24	60x60	46x46	6	33	102	3EGA0750GLDDP	80

girevole piastra freno pedale anteriore / swivel castor with front brake foot lever



						COD	
50x18	60x60	46x46	6	30	72	3EGA0500GLDDP	60
75x24	60x60	46x46	6	33	102	3EGA0750GLDDP	80

girevole foro per vite / bolt hole swivel castor



					COD	
50x18	10		30	72	3EGA0500QLDDP	60
75x24	10		33	99	3EGA0750QLDDP	80

girevole foro per vite freno pedale anteriore / bolt hole swivel castor with front brake foot lever



					COD	
50x18	10		30	72	3EGA0500QLDDP	60
75x24	10		33	99	3EGA0750QLDDP	80

girevole codolo filettato / swivel threaded stem castor



					COD	
50x18	M10x15		30	72	3EGA0500VLDDP	60
75x24	M12x25		33	99	3EGA0750VLDDP	80

girevole codolo filettato freno pedale anteriore / swivel threaded stem castor with front brake foot lever



					COD	
50x18	M10x15		30	72	3EGA0500VLDDP	60
75x24	M12x25		33	99	3EGA0750VLDDP	80


 RUOTE NUCLEO TERMOPLASTICO ANELLO GOMMA GRIGIA E PARAFILI
 PLASTIC CENTRE WHEELS WITH GREY RUBBER TYRES AND THREAD
 GUARDS

Caratteristiche Ruota

Anello in gomma grigia.
 Struttura portante in polipropilene antiurto
 colore nero
 Doppi dischi parafili
 Movimento mozzo:
 alesaggio passante.
 Temperatura d'impiego da +5°C a +40°C.
 Discreta resistenza agli aggressivi chimici.
 Discreta resistenza all'abrasione.

Wheel Features

Grey rubber tyre
Black shock resistant polypropylene
centre wheel.
Thread guards
Type of bearing:
plain bearing.
Temperature range: from +5°C to +40°C.
Fair resistance to chemicals.
Fair resistance to abrasion.



	COD		
50x18	2EGA050006P	6x20	35
50x24	2EGA050L06P	6x30	40
60x24	2EGA060L06P	6x30	50
75x24	2EGA075006P	6x30	40
80x24	2EGA080006P	6x30	55
100x24	2EGA100006P	6x30	55
125x30	2EGA125008P	8x36	80