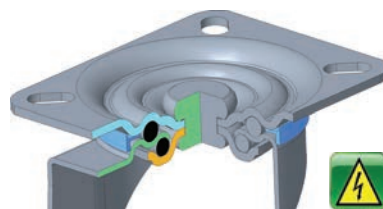


SERIE LA

Componenti in acciaio stampato zincati galvanicamente.
 Rotazione piastra su doppia corona di sfere in acciaio temperato.
 Piste rotazione sfere calibrate e lubrificate.
 Anello di protezione sfere antipolvere.
 Perno ribadito per assemblaggio supporto.
 Frenature integrali a pedale regolabile.



*Pressed steel, zinc-plated components.
 Double ball races with hardened steel balls.
 Calibrated and lubricated ball race tracks.
 Dust protection ring.
 Rivetted or bolted central pin for assembling.
 Adjustable brake foot lever.*

girevole piastra / swivel castor



							COD	
80x25	105x85	80x60	9x16	38	108		1LAR0800GR0	50
100x30	105x85	80x60	9x16	38	128		1LAR1000GR0	70
125x37,5	105x85	80x60	9x16	45	155		1LAR1250GR0	100

1A

girevole foro per vite / bolt hole swivel castor



						COD	
80x25	12	77	38	104		1LAR0800QR0	50
100x30	12	77	38	124		1LAR1000QR0	70
125x37,5	12	77	45	151		1LAR1250QR0	100

fisso piastra / fixed castor



						COD	
80x25	105x85	80x60	9x16	108		1LAR0800FIO	50
100x30	105x85	80x60	9x16	128		1LAR1000FIO	70
125x37,5	105x85	80x60	9x16	155		1LAR1250FIO	100



RUOTE ANTISTATICHE NUCLEO ACCIAIO STAMPATO ANELLO GOMMA NERA

ANTISTATIC WHEELS WITH PRESSED STEEL CENTRE AND BLACK RUBBER TYRE



Caratteristiche Ruota

Anello in gomma nera ANTISTATICA
Struttura portante composta da doppi dischi acciaio stampato zincati galvanicamente assemblati con rivetti alluminio.
Movimento mozzo:
gabbia a rulli.
Temperatura d'impiego da -5°C a +40°C.
Discreta resistenza agli aggressivi chimici.
Durezza battistrada 80 Sh.A +/- 5
Discreta resistenza all'abrasione
Velocità massima di lavoro 4 km/h.
Mezzo di trazione consigliato: manuale
Resistenza elettrica compresa tra 10⁶ e 10⁷ ohm.
(UNI EN 12532)

Wheel Features

ANTISTATIC black rubber tyre.
Pressed steel zinc-plated rivetted rims.
Type of bearing:
roller bearing.
Temperature range: from -5°C to +40°C.
Fair resistance to chemicals.
Tread hardness 80 Sh.A +/- 5
Fair resistance to abrasion.
Max. working speed 4 KPH.
Operation: manual.
Leakage resistance electrical between 10⁶ to 10⁷ ohm.
(UNI EN 12532)

Pavimentazioni Idonee / Floring Type



80x25	OLAR080012	12x40	50
100x30	OLAR100012	12x40	70
125x37,5	OLAR125015	15x46	100

Varianti / Options



Parafili in acciaio stampato
Steel thread guards

Le dimensioni riportate sulle pagine del nostro catalogo sono espresse in millimetri
All dimensional sizes shown on our catalogue are in millimeters.

1A



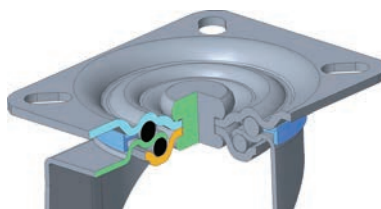
Componenti in acciaio stampato zincati galvanicamente.
Rotazione piastra su doppia corona di sfere in acciaio temperato.

Piste rotazione sfere calibrate e lubrificate.

Anello di protezione sfere antipolvere.

Perno ribadito per assemblaggio supporto.

Frenature integrali a pedale regolabile.



Pressed steel, zinc-plated components.

Double ball races with hardened steel balls.

Calibrated and lubricated ball race tracks.

Dust protection ring.

Riveted or bolted central pin for assembling.

Adjustable brake foot lever.

girevole piastra / swivel castor



								COD		COD	
80x32		105x85	80x60	9x16	38	108		1DHN0800GROPN	120		
100x32		105x85	80x60	9x16	38	128		1DHN1000GROPN	120		
125x32		105x85	80x60	9x16	45	155		1DHN1250GROPN	160		
125x46		135x110	105x80	11x16	55	164				1DHT125BGR0PN	250
160x46		135x110	105x80	11x16	55	199				1DHT1600GROPN	300
200x50		135x110	105x80	11x16	55	239				1DHT200AGROPN	300

girevole piastra freno pedale anteriore regolabile / swivel castor with adjustable front brake foot lever



								COD		COD	
80x32		105x85	80x60	9x16	38	108	120	1DHN0800GRIPN	120		
100x32		105x85	80x60	9x16	38	128	120	1DHN1000GRIPN	120		
125x32		105x85	80x60	9x16	45	155	120	1DHN1250GRIPN	160		
125x46		135x110	105x80	11x16	55	164	140			1DHT125BGRIPN	250
160x46		135x110	105x80	11x16	55	199	140			1DHT1600GRIPN	300
200x50		135x110	105x80	11x16	55	239	140			1DHT200AGRIPN	300

girevole foro per vite / bolt hole swivel castor



								COD		COD	
80x32		12	77		38	104		1DHN0800QROPN	120		
100x32		12	77		38	124		1DHN1000QROPN	120		
125x32		12	77		45	151		1DHN1250QROPN	160		
125x46		16	103		55	158				1DHT125BQR0PN	250
160x46		16	103		55	193				1DHT1600QROPN	300
200x50		16	103		55	233				1DHT200AQR0PN	300

fisso piastra / fixed castor



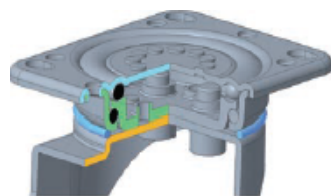
								COD		COD	
80x32		105x85	80x60	9x16		108		1DHN0800FIOPN	120		
100x32		105x85	80x60	9x16		128		1DHN1000FIOPN	120		
125x32		105x85	80x60	9x16		155		1DHN1250FIOPN	160		
125x46		135x110	105x80	11x16		164				1DHT125BFIOPN	250
160x46		135x110	105x80	11x16		199				1DHT1600FIOPN	300
200x50		135x110	105x80	11x16		239				1DHT200AFIOPN	300



DHN



Componenti in acciaio stampato di grosso spessore zincati galvanicamente.
Rotazione piastra su doppia corona di sfere in acciaio.
Piste rotazione sfere coniate, calibrate e lubrificate con ingrassatore.
Anello di protezione sfere antipolvere.
Doppi bulloni per assemblaggio forcella.
Frenature integrale a pedale.



High thickness, pressed steel, zinc-plated components.
Double ball races with hard steel balls.
Calibrated and lubricated ball race tracks.
Grease nipple.
Dust protection ring.
Two bolts for fork's assembling.
Stainless steel aisi 301 foot lever total brake with springs.

girevole piastra / swivel castor



							COD		COD	
80x32	105x85	80x60	9x16	38	108		1DHN0800GT0PN	120		
100x32	105x85	80x60	9x16	38	128		1DHN1000GT0PN	120		
125x32	105x85	80x60	9x16	45	155		1DHN1250GT0PN	160		
125x46	135x110	105x80	11x16	55	164				1DHT125BGT0PN	400
160x46	135x110	105x80	11x16	55	199				1DHT1600GT0PN	450
200x50	135x110	105x80	11x16	55	239				1DHT200AGT0PN	500

girevole piastra freno pedale anteriore regolabile / swivel castor with adjustable front brake foot lever



								COD		COD	
80x32	105x85	80x60	9x16	38	108	120		1DHN0800GT1PN	120		
100x32	105x85	80x60	9x16	38	128	120		1DHN1000GT1PN	120		
125x32	105x85	80x60	9x16	45	155	120		1DHN1250GT1PN	160		
125x46	135x110	105x80	11x16	55	164	140				1DHT125BGT1PN	400
160x46	135x110	105x80	11x16	55	199	140				1DHT1600GT1PN	450
200x50	135x110	105x80	11x16	55	239	140				1DHT200AGT1PN	500

fisso piastra / fixed castor



						COD		COD		
80x32	105x85	80x60	9x16		108		1DHN0800FT0PN	120		
100x32	105x85	80x60	9x16		128		1DHN1000FT0PN	120		
125x32	105x85	80x60	9x16		155		1DHN1250FT0PN	120		
125x46	135x110	105x80	11x16		164				1DHT125BFT0PN	400
160x46	135x110	105x80	11x16		199				1DHT1600FT0PN	450
200x50	135x110	105x80	11x16		239				1DHT200AFT0PN	500




 RUOTE **CONDUTTIVE** NUCLEO POLIAMMIDE ANELLO POLIURETANO
 GRIGIO

CONDUCTIVE POLYAMIDE CENTRE WHEELS WITH GREY
 POLYURETHANE TREAD

Caratteristiche Ruota

Anello in poliuretano grigio **CONDUTTIVO**
 Struttura portante in poliammide **CONDUTTIVA**
 colore grigio.
 Doppi dischi parafili
 Movimento mozzo:
 mono cuscinetto a tenuta stagna
 doppi cuscinetti a tenuta stagna.
 Temperatura d'impiego da -20°C a +70°C.
 Buona resistenza agli aggressivi chimici.
 Durezza battistrada 90 Sh.A +/- 5.
 Ottima resistenza all'abrasione.
 Velocità massima di lavoro 4 km/h.
 Mezzo di trazione consigliato: manuale.
 Resistenza elettrica inferiore 10⁴
 (UNI EN 12532)

Wheel Features

CONDUTTIVE grey polyurethane tread
CONDUTTIVE grey polyamide centre wheel
 double plastic thread guards
 Type of bearing:
 single water proof ball bearing
 double waterproof ball bearings.
 Temperature range: from -20°C to +70°C.
 Good resistance to chemicals.
 Tread hardness 90 Sh.A. +/-5.
 Very good resistance to abrasion.
 Max. working speed 4 KPH.
 Operation: manual.
 Leak resistance < 10⁴
 (UNI EN 12532)



1A

Pavimentazioni Idonee / Flooring Type


80x32	2DHN080008E	8x42	130
100x32	2DHN100008E	8x42	150
125x32	2DHN125010E	10x49	160
125x46		ODHT125B12	12x63 400
160x46		ODHT160012	12x63 450
200x50		ODHT200A12	12x63 500


Varianti / Options