

RUOTE NUCLEO ACCIAIO STAMPATO ANELLO GOMMA NERA
SUPERELASTIC

PRESSED STEEL CENTRE WHEELS WITH BLACK SUPERELASTIC
RUBBER TYRES

Caratteristiche Ruota

Anello in gomma nera SUPERELASTIC
Struttura portante composta da doppi dischi
acciaio stampato zincati galvanicamente
assemblati mediante bulloni.
Movimento mozzo:
doppi cuscinetti a sfere
Temperatura d'impiego da -15°C a +60°C.
Discreta resistenza agli aggressivi chimici.
Ottima resistenza all'abrasione.
Velocità massima di lavoro 6 km/h.
Mezzo di trazione consigliato: manuale-
meccanico

Wheel Features

Black SUPERELASTIC rubber tyre
Pressed steel zinc-plated bolted rims.
Type of bearing:
double ball bearings
Temperature range:
from -15°C to +60°C.
Fair resistance to chemicals.
Very good resistance to abrasion.
Max. working speed 6 KPH.
Operation: manual-mechanical.



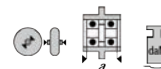
Pavimentazioni Idonee / Floring Type



inch

cerchio
rims

COD



	inch	cerchio rims	COD			
200x80		2.10-4	OTRK200020	20x50	50	230
252x82	3.00-6	2.50C-6	OTRK3006A20	20x50	50	260
252x82	3.00-4	2.10-4	OTRK3004B20	20x50	50	260
252x82	3.00-4	2.10-4	OTRK3004F25	25x50	50	260
252x82	3.00-4	2.10-4	OTRK3004N25	25x50	50	260
306x92	4.00-6	2.50C-6	OTRK4006A20	20x50	50	450
306x92	4.00-4	2.50C-4	OTRK4004N20	20x50	50	450
306x92	4.00-4	2.50C-4	OTRK4004Y20	20x50	50	450
350x105	4.00-6	2.50C-6	OTRK4006N20	20x50	50	600
376x108	15x41/2x8	3.00D-8	OTRK1548Z30	30x92	92	1040
406x106	4.00-8	3.00D-8	OTRK4008E30	30x92	92	500
406x106	4.00-8	3.00D-8	OTRK4008W30	30x92	92	950
406x106	4.00-8	3.00D-8	OTRK4008Y30	30x92	92	950
406x106	4.00-8	3.00D-8	OTRK4008Z30	30x92	92	950
457x123	5.00-8	3.00D-8	OTRK5008W30	30x92	92	1415
457x123	5.00-8	3.00D-8	OTRK5008Z30	30x92	92	1415
522x145	6.00-9	4.00E-9	OTRK6009Z35	35x92	92	1885

Varianti / Options

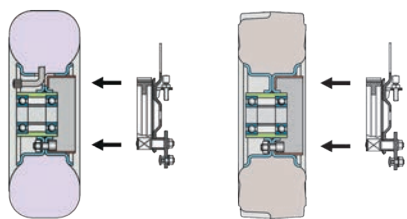


Mozzo: doppi cuscinetti a sfera tenuta stagna
Type of bearing: water-proof ball bearing



Tel: 04/257 68 20

Gsm: 040/99 00 11



Ruota pneumatica o super elastica con predisposizione per ceppo freno.

Pneumatic or super elastic wheel with predisposition for brake shoe.



Tel: 04/257 68 20
Gsm: 040/99 00 11

RUOTE NUCLEO ACCIAIO STAMPATO ANELLO GOMMA NERA
SUPERELASTIC

PRESSED STEEL CENTRE WHEELS WITH BLACK SUPERELASTIC
RUBBER TYRES

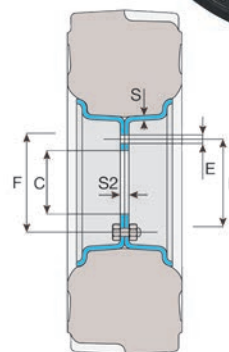


Caratteristiche Ruota

Anello in gomma nera SUPERELASTIC
Struttura portante composta da doppi dischi
acciaio stampato zincati galvanicamente
assemblati mediante bulloni.
Movimento mozzo:
fori di fissaggio per viti.
Temperatura d'impiego da -15°C a +60°C.
Discreta resistenza agli aggressivi chimici.
Durezza battistrada 75 Sh.A +/-3.
Ottima resistenza all'abrasione.
Velocità massima di lavoro 6-10 km/h.
Mezzo di trazione consigliato: manuale-
meccanico

Wheel Features

Black SUPERELASTIC rubber tyre
Pressed steel zinc-plated bolted rims.
Type of bearing:
fixing holes for bolts.
Temperature range: from -15°C to +60°C.
Fair resistance to chemicals.
Tread hardness 75 Sh.A +/-3.
Very good resistance to abrasion.
Max. working speed 6-10 KPH.
Operation: manual-mechanical.



Pavimentazioni Idonee / Floring Type







	COD	inch	cerchio rims	S	S2	ØC	fori n° holes	ØE	ØD	viti n° bolt	ØF			
													DIN.7852 6 Km/h	DIN.7852 10 Km/h
	200x80 OTR0200040	2.10-4		3	6	40	3	M08	77	3	77	M08x16	230	200
	252x82 OTR03006A40	3.00-6	2.50C-6	3	6	40	6	M08	77	8	115	M08x16	260	235
	252x82 OTR03004B40	3.00-4	2.10-4	3	6	40	3	M08	77	3	77	M08x16	260	235
	252x82 OTR03004N40	3.00-4	2.10-4	3	6	40	3	M08	77	3	77	M08x16	260	235
	306x92 OTR04006A40	4.00-6	2.50C-6	3	6	40	6	M08	77	8	115	M08x16	535	485
	306x92 OTR04004N40	4.00-4	2.50C-4	3	6	40	3	M08	77	3	77	M08x16	535	485
	306x92 OTR04004Y40	4.00-4	2.50C-4	3	6	40	3	M08	77	3	77	M08x16	535	485
	350x105 OTR04006N62	4.00-6	2.50C-6	5	10	62	4	M08	95	4	115	M08x20	600	500
	376x108 OTR01548Z62	15x41/2x83.00D-8		4	8	62	4	M10	95	6	160	M10x20	1040	945
	406x106 OTR04008E62	4.00-8	3.00D-8	4	8	62	4	M10	95	6	160	M10x20	500	400
	406x106 OTR04008W62	4.00-8	3.00D-8	4	8	62	4	M10	95	6	160	M10x20	950	860
	406x106 OTR04008Z62	4.00-8	3.00D-8	4	8	62	4	M10	95	6	160	M10x20	950	860
	457x123 OTR05008W62	5.00-8	3.00D-8	4	8	62	4	M10	95	6	160	M10x20	1415	1285
	457x123 OTR05008Z62	5.00-8	3.00D-8	4	8	62	4	M10	95	6	160	M10x20	1415	1285
	522x145 OTR06009Z62	6.00-9	4.00E-9	5	10	62	4	M12	95	6	178	M12x25	1885	1710

Varianti / Options

Le dimensioni riportate sulle pagine del
nostro catalogo sono espresse in millimetri
All dimensional sizes shown on our
catalogue are in millimeters.



	COD	inch	 cerchio rims	 Sh.A	Tipo Gomma rubber type	Tipo Type	Profilo Profile	Colore Colors	
306x92	8PE0004006ASR	4.00-6SR2.50C-6	53±3	M	2	T	G	450	
350x105	8PA0004006AS	4.00-6 2.50C-6	53±3	T	2	RT	M	600	
350x105	8GN0004006AS	4.00-6 2.50C-6	71±5	T	1	T	N	600	
406x106	8GG0004008AR	4.00-8 3.00D-8	75±5	T	3	R	G	500	
406x106	8PV0004008AR	4.00-8 3.00D-8	60±3	T	5	RT	A	500	
406x106	8GN0004008AR	4.00-8 3.00D-8	80±5	T	1	R	N	500	

Legenda / Legend

Tipo Type	Profilo Profile	Colore Colors
1: antiabrasiva	T: tassellato	N: nero
2: antiabrasiva antitraccia	B: bombato	G: grigio
3: antitraccia	BR: bombato rigato	M: marrone
4: antiscivolo	R: rigato	A: avorio
5: antiscivolo antitraccia	RT: rigato tassellato	
1: abrasion proof	T: knobs block tread	N: black
2: abrasion proof and non marking	B: rounded tread pattern	G: grey
3: non marking	BR: rounded and rib tread pattern	M: brown
4: non slip	R: tread pattern	A: ivory
5: non slip and non marking	RT: knobs rib pattern with stripes guides	