

**girevole piastra / swivel castor**

*extra 2 welded N.G. heavy duty*



200x70 255x205 210x160 17 65 335



1AAT2000GW0G 3000

**girevole piastra con posizionale / swivel castor with directional lock**

*extra 2 welded N.G. heavy duty*



200x70 255x205 210x160 17 65 335



1AAT2000GWTG 3000

**fisso piastra / fixed castor**

*extra 2 welded N.G. heavy duty*



200x70 255x205 210x160 17 335



1AAT2000FW0G 3000

**girevole piastra freno a pattino / swivel castor synergistic total brake**

*extra 2 welded N.G. heavy duty*



200x70 255x205 210x160 17 65 335



1AAT2000GW0G 3000

**gir.freno a pattino+posizionale/swivel castor synergistic total brake with directional lock**

*extra welded N.G. heavy duty*



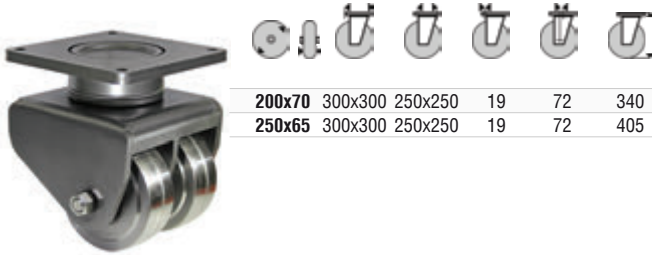
200x70 255x205 210x160 17 65 335



1AAT2000GWRG 3000

**girevole piastra / swivel castor**

*extra 2 welded N.G. heavy duty*

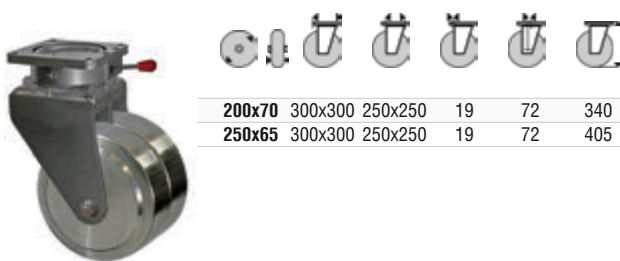


200x70	300x300	250x250	19	72	340
250x65	300x300	250x250	19	72	405

1AAT2000GW0D	8000
1AAT2500GW0D	8000

**girevole piastra con posizionatore / swivel castor with directional lock**

*extra 2 welded N.G. heavy duty*

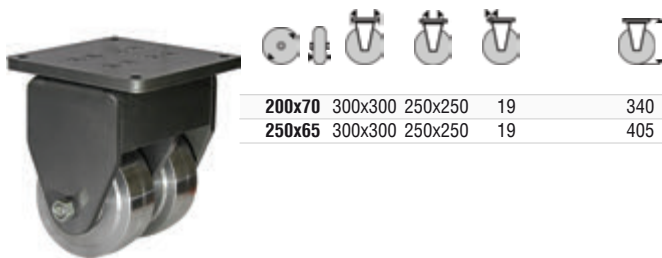


200x70	300x300	250x250	19	72	340
250x65	300x300	250x250	19	72	405

1AAT2000GWTD	8000
1AAT2500GWTD	8000

**fisso piastra / fixed castor**

*extra 2 welded N.G. heavy duty*



200x70	300x300	250x250	19	340
250x65	300x300	250x250	19	405

1AAT2000FW0D	8000
1AAT2500FW0D	8000

**girevole piastra freno a pattino / swivel castor synergistic total brake**

*extra 2 welded N.G. heavy duty*

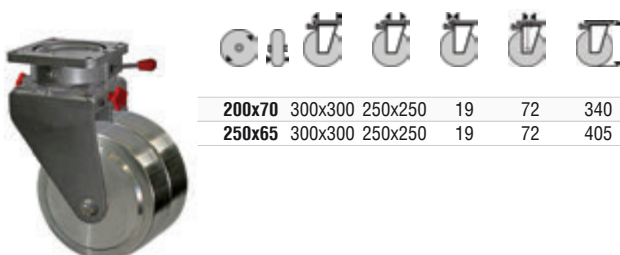


200x70	300x300	250x250	19	72	340
250x65	300x300	250x250	19	72	405

1AAT2000GWDD	8000
1AAT2500GWDD	8000

**gir.freno a pattino+posizionatore/swivel castor synergistic total brake with directional lock**

*extra 2 welded N.G. heavy duty*



200x70	300x300	250x250	19	72	340
250x65	300x300	250x250	19	72	405

1AAT2000GWRD	8000
1AAT2500GWRD	8000

**ruote monolitiche in acciaio**  
**steel wheels**



**componenti ruota - caratteristiche**

- Struttura portante in acciaio.
- Movimento mozzo: doppi cuscinetti a sfera tenuta stagna.
- Temperatura d'impiego da -40°C a +130°C.
- Ottima resistenza agli aggressivi chimici.
- Ottima resistenza all'abrasione.
- Velocità massima di lavoro 4 km/h.
- Mezzo di trazione consigliato: manuale/meccanico

**wheel components - features**

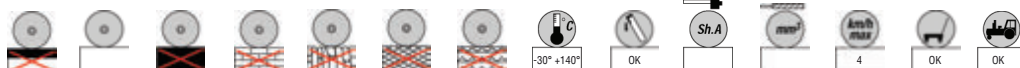
- steel wheel
- Type of bearing: water proof ball bearings.
- Temp. range:from -40°C to +130°C.
- Very good resistance to chemicals.
- Very good resistance to abrasion.
- Max. working speed 4 KPH.
- Operation: manual/mechanical.

indice di utilizzo utilization index

80%



**caratteristiche di base, modalità d'impiego** *main features, applications*



200x70	0AAT200045	45x80	8000
250x65	0AAT250045	45x70	10000

**varianti - accessori** *options - accessories*