

Tel: 04/257 68 20

Gsm: 040/99 00 11

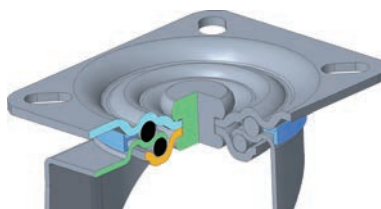
Componenti in acciaio stampato zincati galvanicamente.
Rotazione piastra su doppia corona di sfere in acciaio temperato.

Piste rotazione sfere calibrate e lubrificate.

Anello di protezione sfere antipolvere.

Perno ribadito per assemblaggio supporto.

Frenature integrali a pedale regolabile.



Pressed steel, zinc-plated components.

Double ball races with hardened steel balls.

Calibrated and lubricated ball race tracks.

Dust protection ring.

Riveted or bolted central pin for assembling.

Adjustable brake foot lever.

girevole piastra / swivel castor

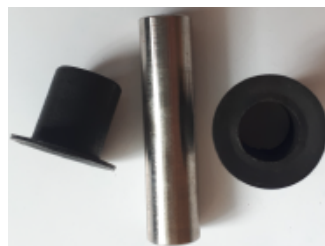
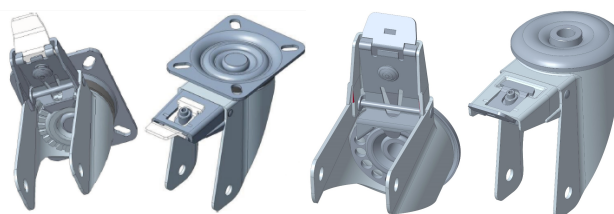


							COD -40° +250°		COD -40° +250°	
80x35	105x85	80x60	9x16	38	108		1RTB0800GRO	120	1RTZ0800GRO	120
100x35	105x85	80x60	9x16	38	128		1RTB1000GRO	120	1RTZ1000GRO	120
125x40	105x85	80x60	9x16	45	155		1RTB1250GRO	180		
150x50	135x110	105x80	11x16	55	194				1RTZ1500GRO	300
200x50	135x110	105x80	11x16	55	239				1RTZ2000GRO	300

fisso piastra / fixed castor



						COD -40° +250°		COD -40° +250°	
80x35	105x85	80x60	9x16		108	1RTB0800FIO	120	1RTZ0800FIO	120
100x35	105x85	80x60	9x16		128	1RTB1000FIO	120	1RTZ1000FIO	120
125x40	105x85	80x60	9x16		155	1RTB1250FIO	120		
150x50	135x110	105x80	11x16		194			1RTZ1500FIO	300
200x50	135x110	105x80	11x16		239			1RTZ2000FIO	300



Varianti/Options

Tel: 04/257 68 20

Gsm: 040/99 00 11

Componenti in acciaio stampato di grosso spessore zincati galvanicamente.

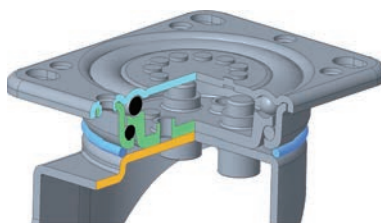
Rotazione piastra su doppia corona di sfere in acciaio.

Piste rotazione sfere coniate, calibrate e lubrificate con ingrassatore.

Anello di protezione sfere antipolvere.

Doppi bulloni per assemblaggio forcella.

Frenature integrale a pedale.



High thickness, pressed steel, zinc-plated components.

Double ball races with hard steel balls.

Calibrated and lubricated ball race tracks.

Grease nipple.

Dust protection ring.

Two bolts for fork's assembling.

Stainless steel aisi 301 foot lever total brake with springs.

girevole piastra / swivel castor

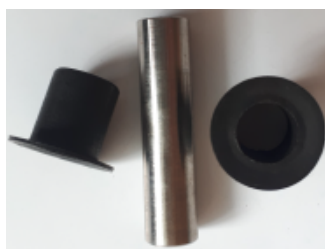


							COD -40° +250°	COD -40° +250°	COD -40° +250°
80x35	105x85	80x60	9x16	40	120	1RTB0800GTO	120		
100x35	105x85	80x60	9x16	40	142	1RTB1000GTO	150		
125x40	105x85	80x60	9x16	45	165	1RTB1250GTO	200		
150x50	135x110	105x80	11x16	50	207			1RTZ1500GTO	300
200x50	135x110	105x80	11x16	55	252			1RTZ2000GTO	400

fisso piastra / fixed castor



							COD -40° +250°	COD -40° +250°	COD -40° +250°
80x35	105x85	80x60	9x16		120	1RTB0800FTO	120		
100x35	105x85	80x60	9x16		142	1RTB1000FTO	150		
125x40	105x85	80x60	9x16		165	1RTB1250FTO	200		
150x50	135x110	105x80	11x16		207			1RTZ1500FTO	300
200x50	135x110	105x80	11x16		252			1RTZ2000FTO	400



Varianti/Options

RUOTE STRUTTURA MONOLITICA IN RESINA FENOLICA
MONOLITHIC PHENOLIC WHEELS



Caratteristiche Ruota

Struttura portante in resina fenolica.
Movimento mozzo:
alesaggio passante.
boccola in PTFE.
bronzina sinterizzata.
Temperatura d'impiego da -40°C a $+280^{\circ}\text{C}$.
con punte sino a 300°C .
Ottima resistenza agli aggressivi chimici.
**Assenza di esalazioni dannose
per l'impiego nell'industria alimentare.**
Buona resistenza all'abrasione.
Velocità massima di lavoro 4 km/h.
Mezzo di trazione consigliato: manuale.

Wheel Features

Phenolic wheel.
Type of bearing:
plain bearing.
PTFE bushings.
syntherized bushing
Temperature range: from -40°C to $+280^{\circ}\text{C}$.
for short times $+300^{\circ}\text{C}$.
Very good resistance to chemicals.
**No dangerous fumes for food
alimentary industry**
Good resistance to abrasion.
Max. working speed 4 KPH.
Operation: manual.



Pavimentazioni Idonee / Floring Type



80x35	ORTA080012	12x39	120	ORTB080010	10x40	120	ORTZ080010	10x40	120
100x35	ORTA100012	12x39	150	ORTB100010	10x40	150	ORTZ100010	10x40	125
125x40	ORTA125015	15x45	200	ORTB125012	12x46	200			
150x50							ORTZ150020	20x59	300
200x50							ORTZ200020	20x59	400

Varianti / Options



RTK cuscinetto a sfera con tenuta labirinto
ball bearing with labyrinth seal